

SOLFEGGIO

II.

C - dur LJESTVICA

I. tetrakord II. tetrakord

III - IV VII - VIII

I - TONIKA IV - SUBDOMINANTA V - DOMINANTA VII - VOĐICA

REA

1 - 5 - 5 - 8 5 - 8 - 5 - 1 7 - 8 2 - 1 6 - 5 - 4 - 5 3 - 2 - 1 6 - 7 - 8 4 - 3 8 - 5 - 5 - 1

Kadenca

Vokaliza

Allegro *Can Can* J. Offenbach

1.

Allegro I. M. Jarnović

2.

J. Brahms

3. Musical notation for exercise 3, first staff. Treble clef, 2/4 time signature. The melody starts with a piano (*p*) dynamic and moves to a mezzo-forte (*mf*) dynamic. It consists of eighth and quarter notes with some rests.

Musical notation for exercise 3, second staff. Treble clef, 2/4 time signature. The melody continues with a piano (*p*) dynamic, featuring slurs over groups of notes.

B. Bartok

4. Musical notation for exercise 4, first staff. Treble clef, 2/4 time signature. The melody features slurs and a mix of eighth and quarter notes.

Musical notation for exercise 4, second staff. Treble clef, 2/4 time signature. The melody continues with slurs and eighth notes.

Over The Rainbow / Iznad duge

H. Arlen

5. Musical notation for exercise 5, first staff. Treble clef, common time (C). The melody is simple, using quarter and half notes.

Musical notation for exercise 5, second staff. Treble clef, common time (C). The melody continues with quarter and half notes.

Allegro

D. Kabalevski

6. Musical notation for exercise 6, first staff. Bass clef, 2/4 time signature. The tempo is marked **Allegro**. The melody starts with a mezzo-forte (*mf*) dynamic.

Musical notation for exercise 6, second staff. Bass clef, 2/4 time signature. The melody continues with a forte (*f*) dynamic.

Hrvatska narodna

7. Musical notation for exercise 7, first staff. Bass clef, 4/4 time signature. The melody features eighth and quarter notes.

Musical notation for exercise 7, second staff. Bass clef, 4/4 time signature. The melody continues with eighth and quarter notes.

Allegretto

H. Duvernoy

8. 







9. 



J. Brahms

10. 

11. 

Allegro grazioso

W. A. Mozart

12. 



PRIRODNA a - mol LJESTVICA

I. tetrakord II. tetrakord

II - III V - VI

I - TONIKA IV - SUBDOMINANTA V - DOMINANTA VIII - TONIKA

Vokaliza

1.

Ukrajinska narodna pjesma

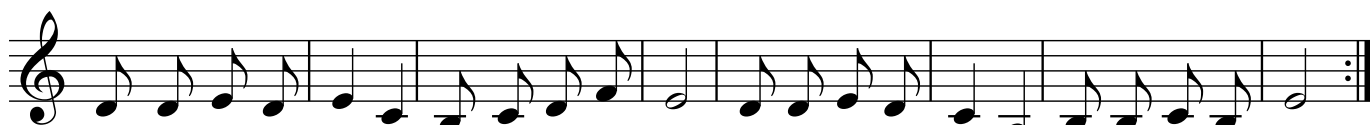
*Jesenska pjesma*

Mirno

V. Stojanov



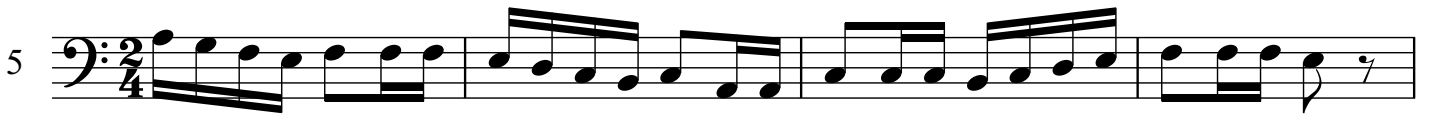
Ti-ho, ti-ho pa-da list za lis-tom žut, po-kri-o je sta - ze, ce-ste, šum-ski put.
Ne-sta-le su pti-ce da-le-ko na jug, o - ti-šle sa sun-cem, put je nji-hov dug.



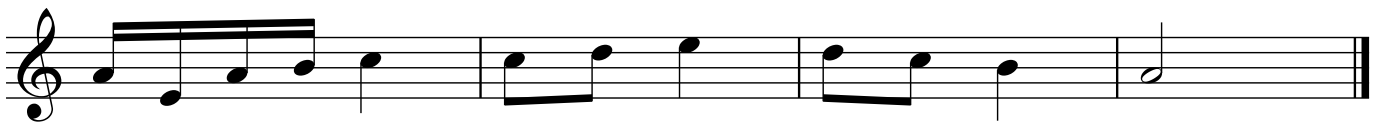
Vje-tar gra-ne lju-lja njež-no k'o u snu, bla-gi mir je šu-mu o-bu-ze-o svu.
pje-sme ne-ma vi-še, svu-da vla-da muk, sa-mo žu-to liš-će tu-žno pa-da svud.



6



A. Dvorak



Koncert za violinu u a molu

A. Vivaldi



MP

I. tetrakord II. tetrakord

II - III V - VI VII - VIII

I - TONIKA IV - SUBDOMINANTA V - DOMINANTA VII - VOĐICA VIII - TONIKA

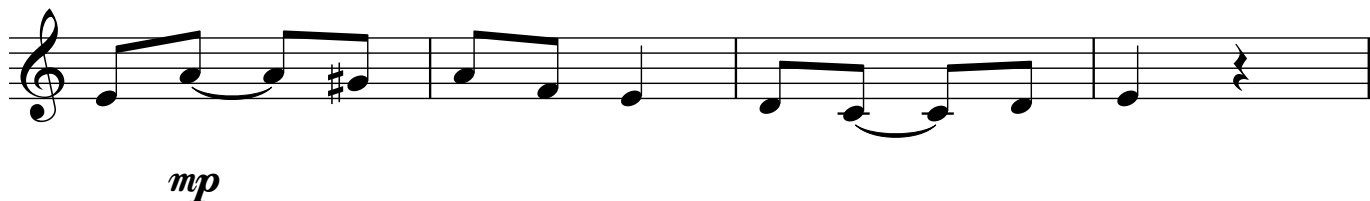
Kadenca

Vokalize


Risoluto

I. Golčić

1. 







Moderato

I. Golčić

2. 

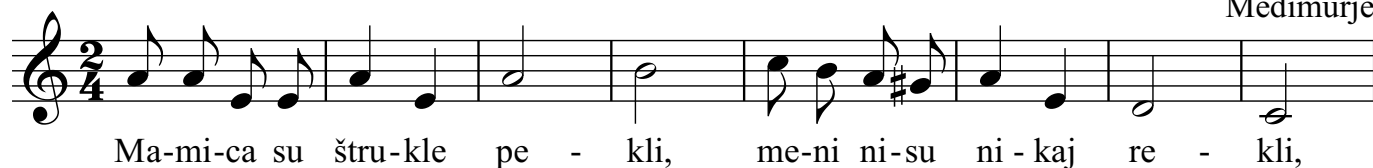


Seljančica

J. Ph. Rameau

3. 



5. 

Ma-mi-ca su štru-kle pe - kli, me-ni ni-su ni - kaj re - kli,



ma - mi - ca su štru-kle pe - kli me-ni ni-su ni-kaj_ re - kli.

6. 



7. 



MELODIJSKA a - mol LJESTVICA

I. tetrakord II. tetrakord

II - III VII - VIII

II. tetrakord I. tetrakord

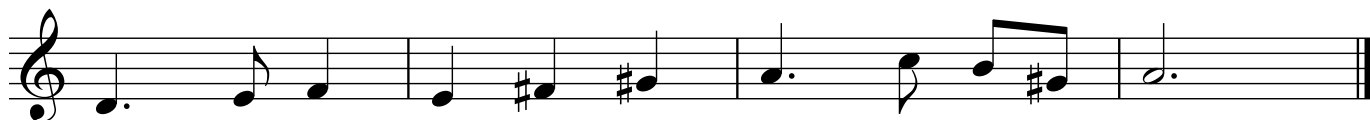
VI - V III - II

R E A

1 5 - 5 - 8 5 - 8 - 5 - 1 7 - 8 - 2 - 1 6 - 5 - 4 - 5 - 3 - 2 - 1

6 - 7 - 8 - 6 - 5 - #7 - 8 - 3 - 2 - 1 #6 - #7 - 8 - 4 - 3 - 8 - 5 - 5 - 1

Vokalize

**Moderato**

Bjeloruska narodna pjesma



5.

6.

7.

G dur LJESTVICA

I. tetrakord II. tetrakord

III - IV VII - VIII

GLAVNI STUPNJEVI:

I - TONIKA V - DOMINANTA VIII - TONIKA VII - VOĐICA

IV - SUBDOMINANTA

R E A

1 - 5 - 5 - 8 5 - 8 - 5 - 1 7 - 8 2 - 1 6 - 5 - 4 - 5 3 - 2 - 1 6 - 7 - 8 4 - 3 8 - 5 - 5 - 1

Kadenca

Vokalize

W. A. Mozart

*Dan praznički*

W. A. Mozart

*Rugalica (kanon)*

C. Orff

*Zvone bijeli zvončići*

Zvo-ne bi-je-li zvon-či-ći. Ti-ho, ti-ho, ti-še. Din, don, din, don. Tih je nji-hov zvon.



Zas-pa-o je cije-li svijet, u-tih-nu-o pti-ca let. Din, don, još se ču-je noć-nog zvo-na zvon.

*Dječja koračnica***Allegro**

F. Schubert

*Tamburin*

J. J. Rousseau

**f**

**Allegretto***Turski marš*

W.A. Mozart

*Menuet*

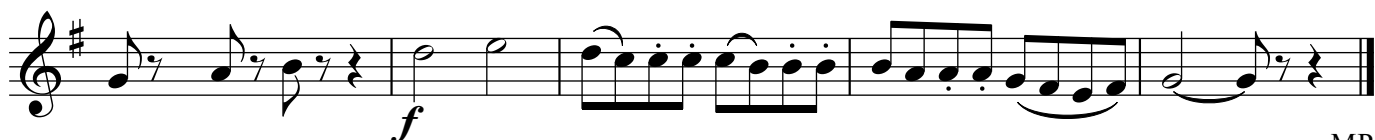
C. G. Neefe

*p**Pjesma*

W. A. Mozart

**Allegro***Serenada "Mala noćna muzika"*

W. A. Mozart



HARMONIJSKA e - mol LJESTVICA

I. tetrakord II. tetrakord

II - III V - VI VII - VIII

I - TONIKA IV - SUBDOMINANTA V - DOMINANTA VIII - TONIKA VII - VOĐICA

Kadenca

Vokaliza

1.

Allegretto L. van Beethoven

2.

p *sf*

10 *p* *cresc.*

Andante sostenuto *Vehni, vehni fijoлица* Međimurje

3.

The image shows a musical score for 'HARMONIJSKA e - mol LJESTVICA'. It consists of three numbered sections. Section 1 is a vocal exercise with two staves, featuring a scale-like melody with a 'Vokaliza' label. Section 2 is an instrumental piece in 3/4 time, marked 'Allegretto' and 'L. van Beethoven', with dynamics like 'p' and 'sf'. Section 3 is an instrumental piece in 2/4 time, marked 'Andante sostenuto' and 'Međimurje', with the title 'Vehni, vehni fijoлица'. The score includes various musical notations such as treble and bass clefs, notes, rests, and dynamic markings.

MELODIJSKA e - mol LJESTVICA

I. tetrakord II. tetrakord

II - III VII - VIII

II. tetrakord I. tetrakord

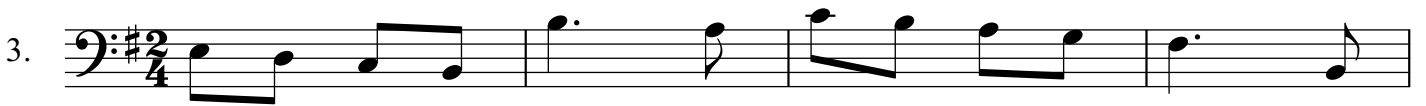
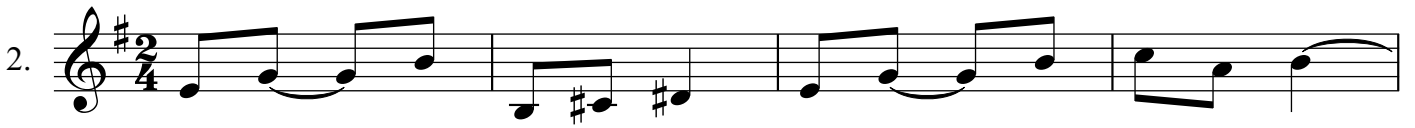
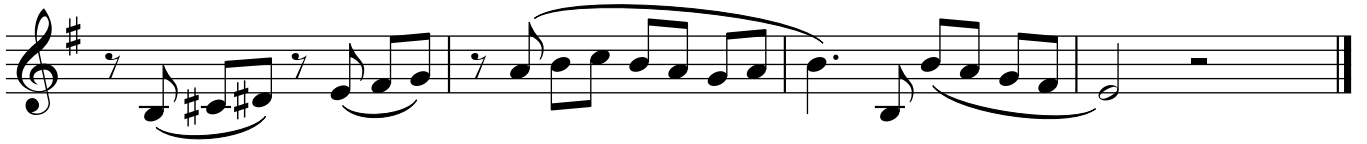
VI - V III - II

REA

1 5 - 5 - 8 5 - 8 - 5 - 1 7 - 8 - 2 - 1 6 - 5 - 4 - 5 - 3 - 2 - 1

6 - 7 - 8 - 6 - 5 - #7 - 8 - 3 - 2 - 1 #6 - #7 - 8 - 4 - 3 - 8 - 5 - 5 - 1

Vokaliza



Tko zna jedrit'

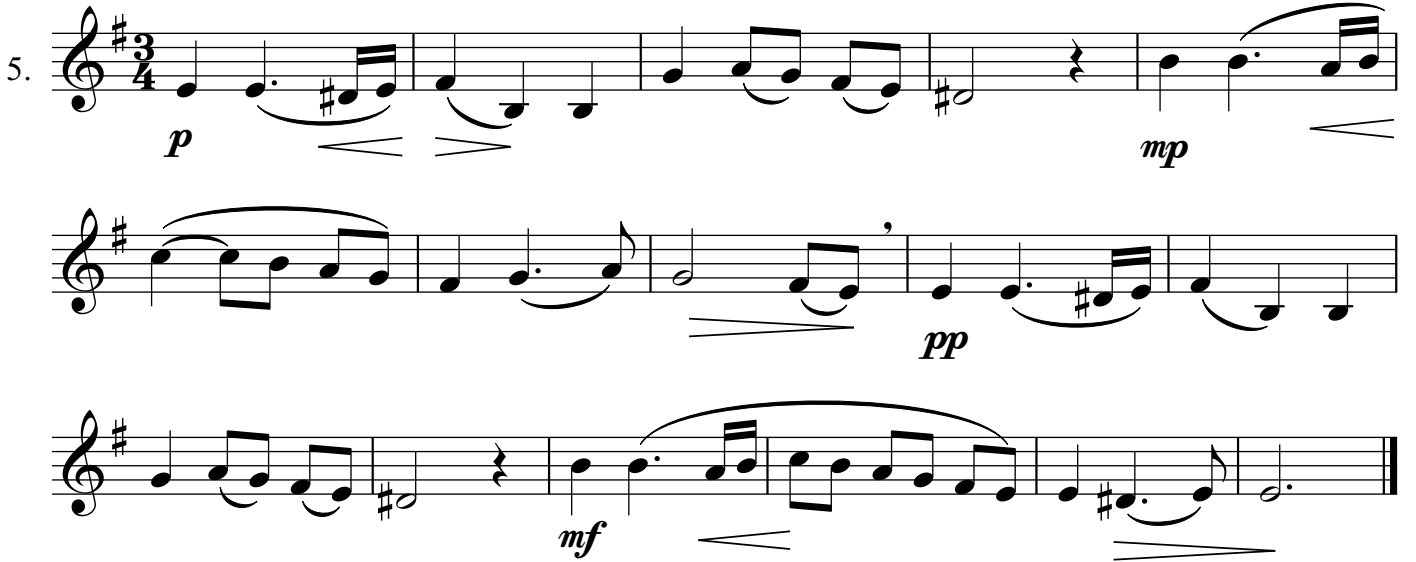
Švedska narodna



Tko zna je - drit' bez vje - tro - va, tko zna ve - slat' bez ve - sla,
Ja znam je - drit' bez vje - tro - va, ja znam ve - slat' bez ve - sla,

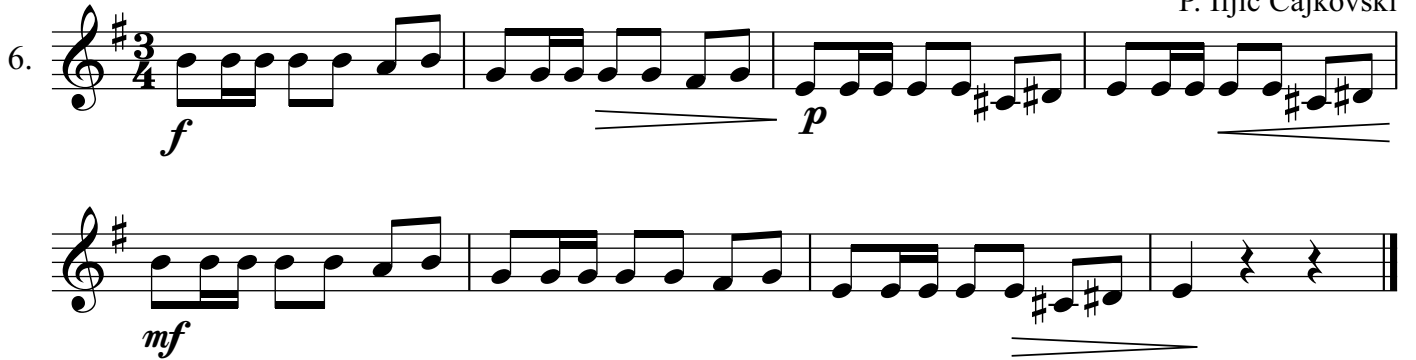


MP tko će o - tić' od dru - ga svog, da ne pus - ti su - za?
al ne mo - gu dru - ga svog os - ta - vit' bez su - za.

5. 

Poloneza

P. Iljič Čajkovski

6. 

G. F. Händel

7. 

42

Risoluto

A. Diabelli

8. 

J. Haydn

1. 



Ulomak iz opere "Vilhelm Tell"

G. Rossini

2. 
pp cresc. poco a poco


f

3. 



Allegro vivace

Valcer

A. Dvořák

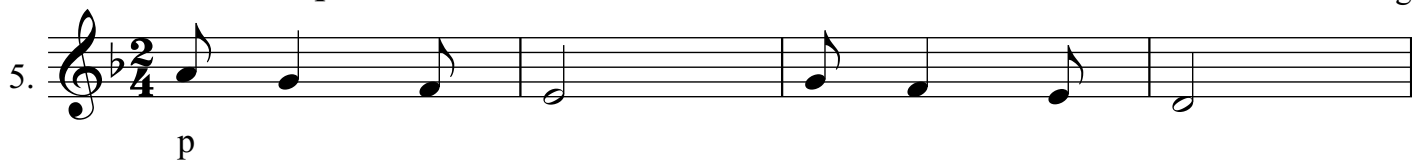
4. 
f

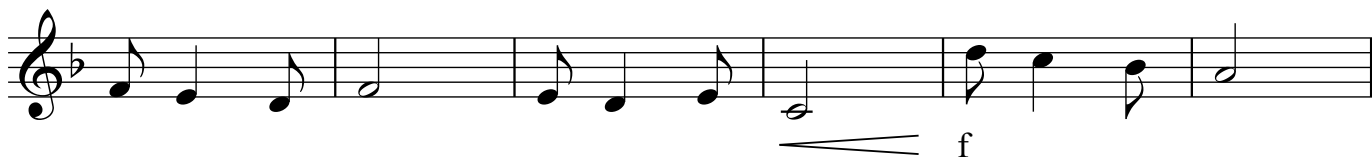

p

MP

Poco tranquillo

23
E. Grieg

5. 



G.F. Händel

Comodo

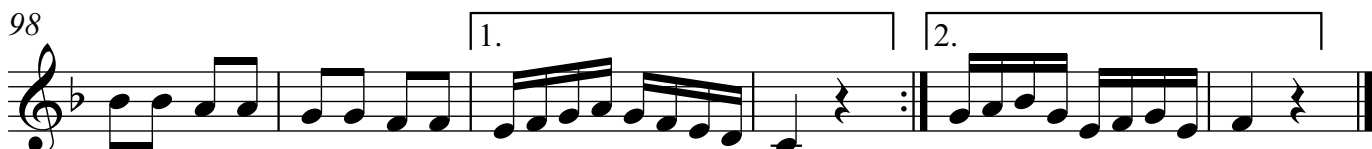
6. 



Koncert za trubu, III. stavak

J. Haydn

7. 

98 

MP

8.

Ptičja tuga

L. van Beethoven

9.

1.O, ka - ži ma - la pti - co ti što tu - žno pje - vaš tol? I
 zna - deš mi - lo dije - te ti što tu - ga je i jad, u -
 2.I gnije-zdo je po - ru - še - no moj ma - li skro-mni dom. Ja
 ču - o dje - čak o - bje - sni, za čin taj bje ga sram. On

o - ko gnij-zda ža-lo-sno ti le - tiš na - o - kol. "Da
 kra - den mi je ma-li ptić, stog ja dna pla-čem sad.
 ži - vjet vi - še ne-mo-gu u zlob-nom svije-tu tom." To
 gnije-zdo br - zo po-pra-vi i pti-ča vra - ti sam.

Pleši, pleši

Slovačka

10. **Veselo**

Ple - ši, ple - ši, pos-ko - či, pos-ko - či, sa-mo peć mi ne sru - ši, ne sru - ši.

Dob-ra peć je za zi-mu, za zi-mu, ne-ma svat-ko pe-ri - nu, pe-ri - nu.

MP La la.

PRIRODNA d - mol LJESTVICA

I. tetrakord II. tetrakord

II - III V - VI

I - TONIKA IV - SUBDOMINANTA V - DOMINANTA VIII - TONIKA

Vokaliza

1. *Grad se beli* Međimurje

Grad se be - li pre-ko Ba-la - ti - na, grad se be - li pre-ko Ba-la - ti - na.

Su-naj naj, su-naj naj, su-naj naj, su-naj naj. Grad se be - li pre-ko Ba-la - ti - na.

2. *Elegija* A. Glazunov

mp *mf*

3. *Andante con motto* *Ulomak iz Talijanske simfonije* F. Mendelssohn

p *mf*

HARMONIJSKA d - mol LJESTVICA

I. tetrakord
II - III V - VI VII - VIII

II. tetrakord
VIII - TONIKA VII - VOĐICA

I - TONIKA IV - SUBDOMINANTA V - DOMINANTA

Kadenca

Vokaliza

Moderato*Menuet*

L. Mozart

1.

Fugetta

H. Čičkov

2.

MELODIJSKA d - mol LJESTVICA

I. tetrakord II. tetrakord

II - III VII - VIII

II. tetrakord I. tetrakord

VI - V III - II

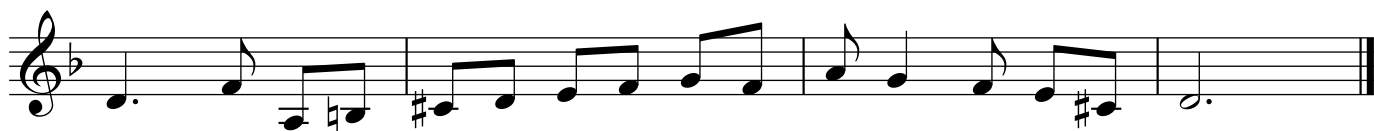
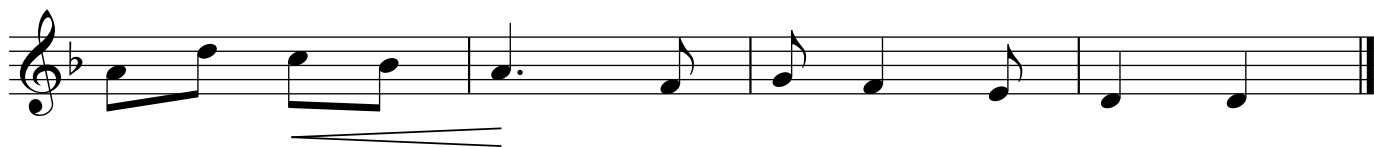
REA

1 5 - 5 - 8 5 - 8 - 5 - 1 7 - 8 - 2 - 1 6 - 5 - 4 - 5 - 3 - 2 - 1

REA

6 - 7 - 8 - 6 - 5 - #7 - 8 - 3 - 2 - 1 #6 - #7 - 8 - 4 - 3 - 8 - 5 - 5 - 1

Vokaliza



Zelen papar

Španjolska narodna



Ze - len pa - par ti si htje - la, ze - len pa - par ću ti dat'.
To je na - ša ma - la taj - na, da nas gri - je sun - čev žar.



Prem - da mož - da ne - bi smje - la, ti doć' češ kad kuc - ne sat.
Ti i ja smo sli - ka sjaj - na. Što rek - li bi kra - san par!



Ai, lai, la, la, la, ai, lai, la, la, la, ai, lai, la, la, la, la.
Ai, ai, ai, ai.

Andante

L. Pachelbel



Allegro vivace

F. Schubert

5.

Tum balalajka

Židovska narodna

8.

Sto - ji dje - čak, gle - da u noć,
 Sr - ce tu - će kad ne - kog vo - li,

noć - je ce noć, a jut - ro će doć.
 sr - ce ska - će, sr - ce lu - pa.

Ko - ga da pi - ta i - ma li ne - gdje
 Kad sne - kim že - liš i - grat se sku - pa,

neš - to što go - ri, a ne iz - go - ri.
 sr - ce go - ri, a ne i - zgo - ri.

Tum - ba - la, tum - ba - la, tum ba - la - laj - ka,

tum - ba - la, tum - ba - la, tum ba - la - laj - ka,

tum ba - la - laj - ka svi - raj mi svi - raj,

MP tum ba - la - laj - ka ve - se - lo!

TONSKI SUSTAV

Velika oktava Mala oktava Prva oktava Druga oktava Treća oktava

C D E F G A H c d e f g a h c1 d1 e1 f1 g1 a1 h1 c2 d2 e2 f2 g2 a2 h2 c3 d3 e3

POTPISI SOLMIZACIJOM I ABECEDOM.

1.

2.

PREPIŠI U VIOLINSKI ILI BAS KLJUČ.

3.

7.

Musical notation for exercise 7, measures 1-4. Treble clef, key signature of one sharp (F#), 4/4 time signature. Bass clef, key signature of one sharp (F#), 4/4 time signature. Treble clef contains a whole note F#4. Bass clef contains a quarter note G4, eighth notes A4-B4, quarter note C5, eighth notes B4-A4, quarter note G4, eighth notes F#4-E4, quarter note D4.

Musical notation for exercise 7, measures 5-8. Treble clef, key signature of one sharp (F#), 4/4 time signature. Bass clef, key signature of one sharp (F#), 4/4 time signature. Treble clef is empty. Bass clef contains a quarter note G4, eighth notes A4-B4, quarter note C5, eighth notes B4-A4, quarter note G4, eighth notes F#4-E4, quarter note D4.

8.

Musical notation for exercise 8, measures 1-4. Treble clef, key signature of two flats (Bb, Eb), 2/4 time signature. Bass clef, key signature of two flats (Bb, Eb), 2/4 time signature. Treble clef contains a quarter note C4, eighth notes D4-E4, quarter note F4, eighth notes G4-A4, quarter note B4, eighth notes C5-B4, quarter note A4, eighth notes G4-F4, quarter note E4. Bass clef is empty.

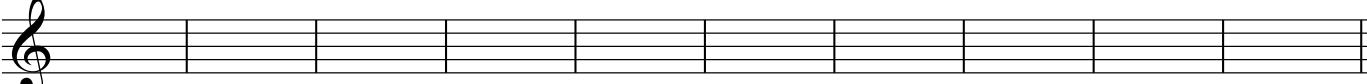
Musical notation for exercise 8, measures 5-8. Treble clef, key signature of two flats (Bb, Eb), 2/4 time signature. Bass clef, key signature of two flats (Bb, Eb), 2/4 time signature. Treble clef contains a quarter note C4, eighth notes D4-E4, quarter note F4, eighth notes G4-A4, quarter note B4, eighth notes C5-B4, quarter note A4, eighth notes G4-F4, quarter note E4. Bass clef is empty.


9.


Musical notation for exercise 9, measures 1-4. Treble clef, key signature of two flats (Bb, Eb), 4/4 time signature. Bass clef, key signature of two flats (Bb, Eb), 4/4 time signature. Treble clef contains a quarter rest, eighth notes G4-A4-B4, quarter note C5, eighth notes B4-A4, quarter note G4, eighth notes F#4-E4, quarter note D4. Bass clef is empty.


Musical notation for exercise 9, measures 5-8. Treble clef, key signature of two flats (Bb, Eb), 4/4 time signature. Bass clef, key signature of two flats (Bb, Eb), 4/4 time signature. Treble clef contains a quarter rest, eighth notes G4-A4-B4, quarter note C5, eighth notes B4-A4, quarter note G4, eighth notes F#4-E4, quarter note D4. Bass clef is empty.

UPIŠI ZADANI TON.

10. 
 a2 g1 h a1 e2 f1 a c3 e1 d2

11. 
 g2 c1 h2 f f2 d1 a2 c2 g2 d2


12. 
 F e H e1 g D a d1 G g

13. 
 h c1 c e A fl d f C E

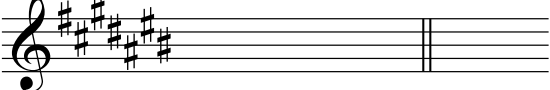
PREDZNACI

SU ZNAKOVI KOJI SE STAVLJAJU NA POČETAK CRTOVLJA IZA KLJUČA ILI ISPRED NOTE.
 PREDZNACI SU POVISILICE, SNIZILICE I RAZRJEŠILICE.
 PREDZNAK IZA KLJUČA VRIJEDI ZA CIJELU SKLADBU, A ISPRED NOTE VRIJEDI DO
 KRAJA TAKTA U KOJEM JE NAPISAN.

POVISILICA # JE ZNAK KOJI POVISUJE NOTU ZA POLA TONA.
 OSNOVNOM TONU DODAJE SE NASTAVAK IS.



Cis Dis Eis Fis Gis Ais His



POVISILICE SE IZA KLJUČA PIŠU OVIM REDOM:
 Fis - Cis - Gis - Dis - Ais - Eis - His.

SNIZILICA ♭ JE ZNAK KOJI SNIZUJE NOTU ZA POLA TONA.
OSNOVNOM TONU DODAJE SE NASTAVAK ES. IZNIMKA JE TON A KOJI SE ZOVE
AS I H KOJI SE ZOVE B.

Ces Des Es Fes Ges As B

SNIZILICE SE IZA KLJUČA PIŠU OVIM REDOM:
B - Es - As - Des - Ges - Ces - Fes.

RAZRJEŠILICA ♯ JE ZNAK KOJI SE PIŠE ISPRED TONA.
RAZRJEŠILICOM UKIDAMO POVISILICU ILI SNIZILICU.

g fis g f d es d e

POTPIŠI ABECEDOM.

1.

2.

3.

4.

UPIŠI ZADANI TON.

5.

as1 gis1 b cis1 es2 fis1 ais dis2

6.

ges1 des1 ces2 fes1 b1 eis1 fes2 as1

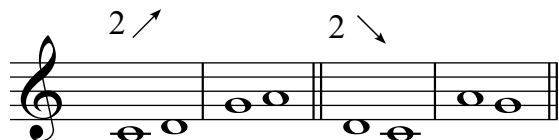
7.

fis es B dis1 gis As ais des cis cis1 MP

INTERVALI

SEKUNDA (2)

JE RAZMAK IZMEĐU DVA SUSJEDNA TONA (DVA SUSJEDNA STUPNJA).



MOŽE BITI UZLAZNA I SILAZNA.

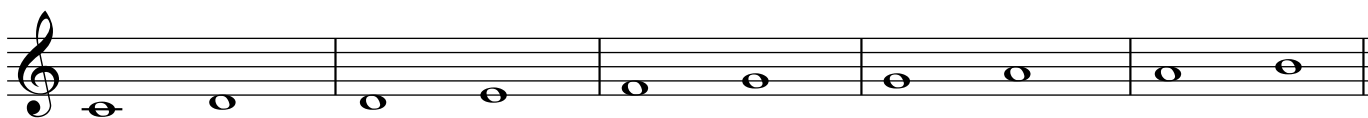
PO VRSTI SEKUNDE MOGU BITI MALE (M2) I VELIKE (V2).



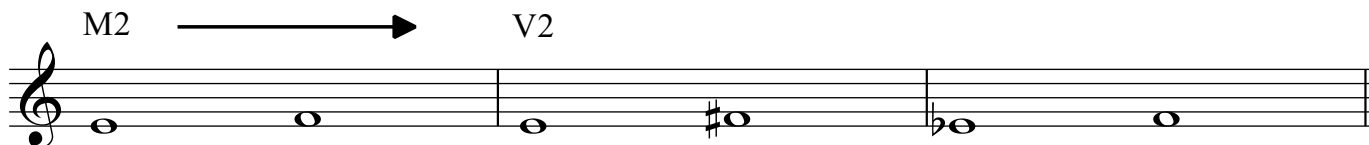
M 2

MALA SEKUNDA (M2) JE RAZMAK OD POLA STEPENA. (Zapamti - M2 su polustepeni C dura)

V 2 VELIKA SEKUNDA (V2) JE RAZMAK OD CIJELOG STEPENA.



OD MALE SEKUNDE RADIŠ VELIKU TAKO DA POVISIŠ GORNJI ILI SNIZIŠ DONJI TON.



M2

V2

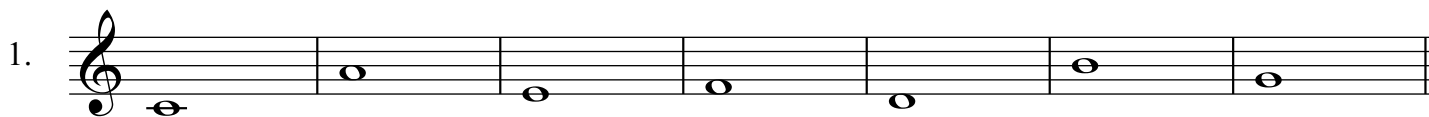
OD VELIKE SEKUNDE RADIŠ MALU TAKO DA SNIZIŠ GORNJI ILI POVISIŠ DONJI TON.



V2

M2

NAPIŠI SEKUNDE UZLAZNO I POTPIŠI ABECEDOM.



NAPIŠI SEKUNDE SILAZNO I POTPIŠI ABECEDOM.



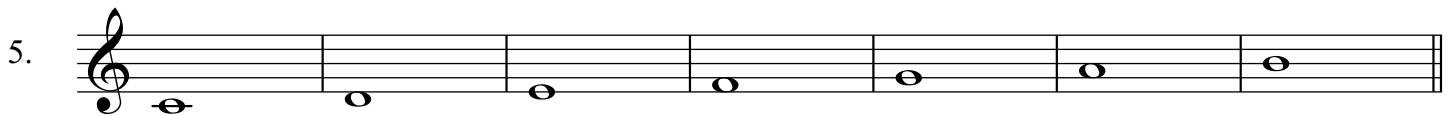
NAPIŠI SEKUNDE UZLAZNO I POTPIŠI ABECEDOM.



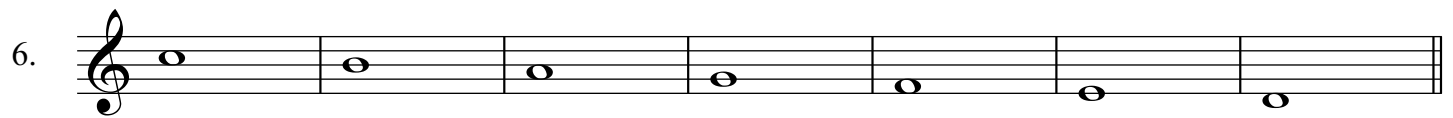
NAPIŠI SEKUNDE SILAZNO I POTPIŠI ABECEDOM.



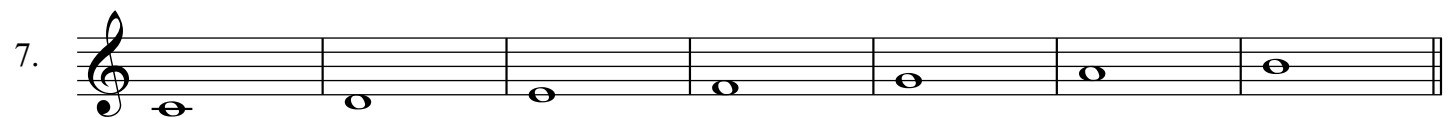
NAPIŠI M2 UZLAZNO I POTPIŠI ABECEDOM.



NAPIŠI M2 SILAZNO I POTPIŠI ABECEDOM.



NAPIŠI V2 UZLAZNO I POPIŠI ABECEDOM.



NAPIŠI V2 SILAZNO I POTPIŠI ABECEDOM.



NAPIŠI M2 UZLAZNO I POTPIŠI ABECEDOM.



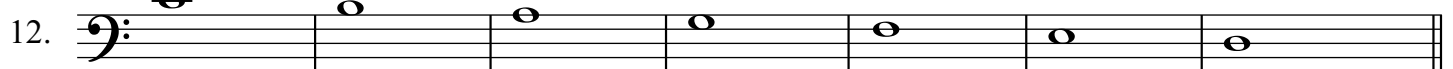
NAPIŠI M2 SILAZNO I POTPIŠI ABECEDOM.



NAPIŠI V2 UZLAZNO I POPIŠI ABECEDOM.



NAPIŠI V2 SILAZNO I POTPIŠI ABECEDOM.




ODREDI SEKUNDE PO VRSTI (M2 ILI V2) I POTPIŠI ABECEDOM.




ODREDI SEKUNDE PO VRSTI (M2 ILI V2) I POTPIŠI ABECEDOM.

14. 

ODREDI SEKUNDE PO VRSTI (M2 ILI V2) I POTPIŠI ABECEDOM.

15. 

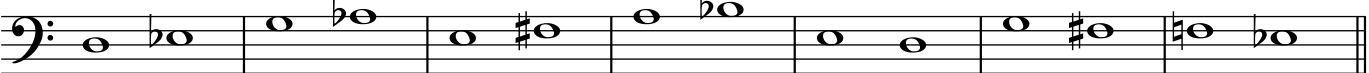
ODREDI SEKUNDE PO VRSTI (M2 ILI V2) I POTPIŠI ABECEDOM.

16. 

ODREDI SEKUNDE PO VRSTI (M2 ILI V2) I POTPIŠI ABECEDOM.

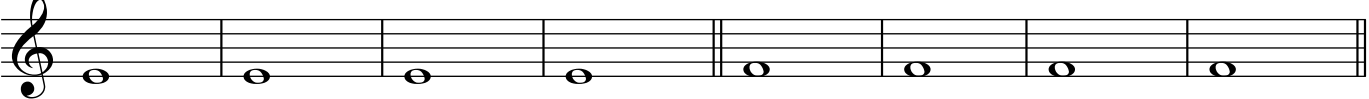
17. 

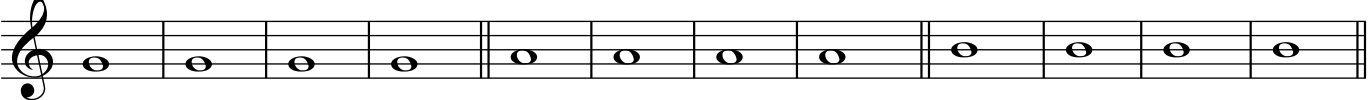
ODREDI SEKUNDE PO VRSTI (M2 ILI V2) I POTPIŠI ABECEDOM.

18. 

NAPIŠI V2 I M2 UZLAZNO I SILAZNO I POTPIŠI ABECEDOM.


19. 

20. 

21. 

NAPIŠI M2 UZLAZNO

NAPIŠI M2 SILAZNO

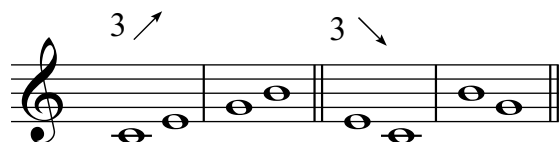
22. 

NAPIŠI V2 UZLAZNO

NAPIŠI V2 SILAZNO

23. 

TERCA (3)
JE RAZMAK IZMEĐU TRI STUPNJA.

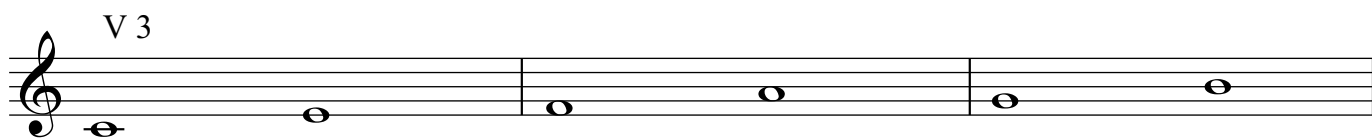


MOŽE BITI UZLAZNA I SILAZNA.

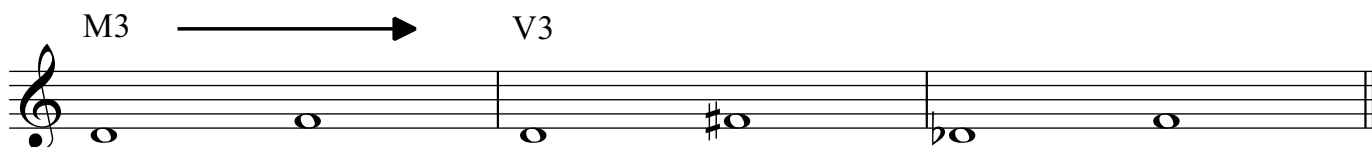
PO VRSTI TERCE MOGU BITI MALE (M3) I VELIKE (V3).
MALA TERCA SE SASTOJI OD JEDNOG CIJELOG STEPENA I POLA STEPENA.



VELIKA TERCA SE SASTOJI OD DVA CIJELA STEPENA.
(Zapamti - velike terce su na glavnim stupnjevima C dura.)



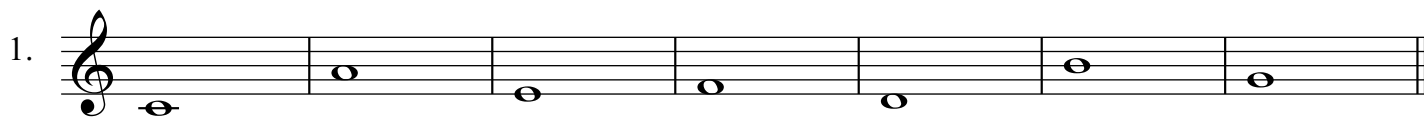
OD MALE TERCE RADIŠ VELIKU TAKO DA POVISIŠ GORNJI ILI SNIZIŠ DONJI TON.



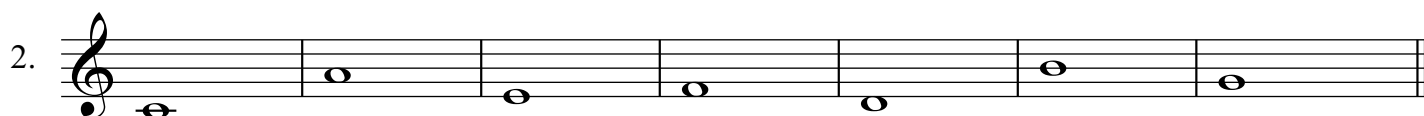
OD VELIKE TERCE RADIŠ MALU TAKO DA SNIZIŠ GORNJI ILI POVISIŠ DONJI TON.



NAPIŠI TERCE UZLAZNO I POTPIŠI ABECEDOM.



NAPIŠI TERCE SILAZNO I POTPIŠI ABECEDOM.



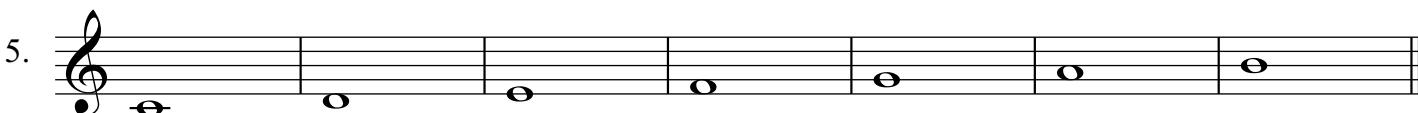
NAPIŠI TERCE UZLAZNO I POTPIŠI ABECEDOM.



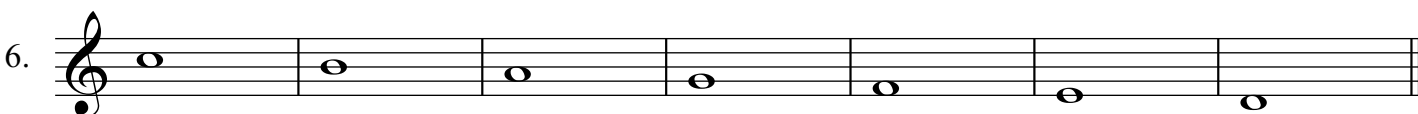
NAPIŠI TERCE SILAZNO I POTPIŠI ABECEDOM.



NAPIŠI M3 UZLAZNO I POTPIŠI ABECEDOM.



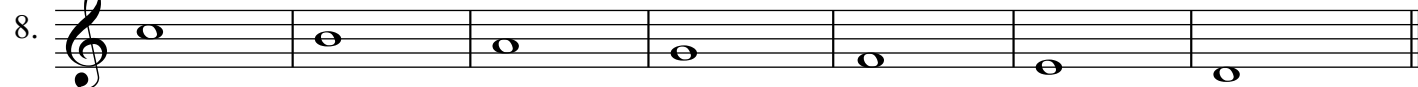
NAPIŠI M3 SILAZNO I POTPIŠI ABECEDOM.



NAPIŠI V3 UZLAZNO I POPIŠI ABECEDOM.



NAPIŠI V3 SILAZNO I POTPIŠI ABECEDOM.



NAPIŠI M3 UZLAZNO I POTPIŠI ABECEDOM.



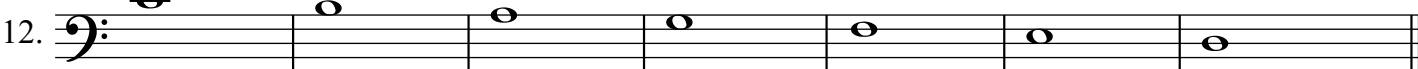
NAPIŠI M3 SILAZNO I POTPIŠI ABECEDOM.



NAPIŠI V3 UZLAZNO I POPIŠI ABECEDOM.



NAPIŠI V3 SILAZNO I POTPIŠI ABECEDOM.



ODREDI TERCE PO VRSTI (M3 ILI V3) I POTPIŠI ABECEDOM.



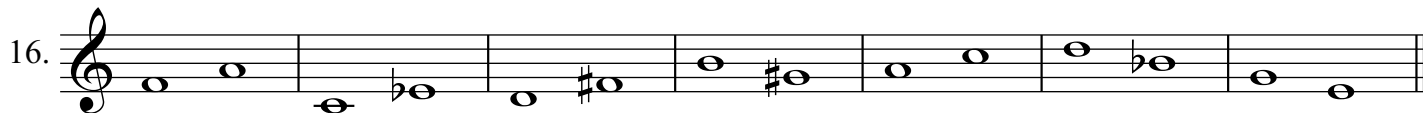
ODREDI TERCE PO VRSTI (M3 ILI V3) I POTPIŠI ABECEDOM.



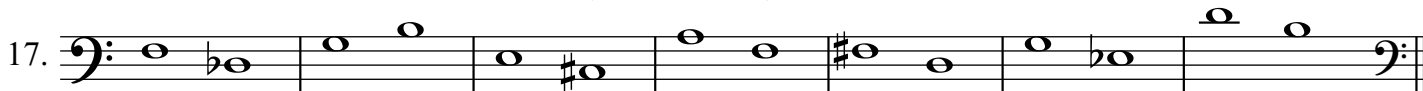
ODREDI TERCE PO VRSTI (M3 ILI V3) I POTPIŠI ABECEDOM.



ODREDI TERCE PO VRSTI (M3 ILI V3) I POTPIŠI ABECEDOM.



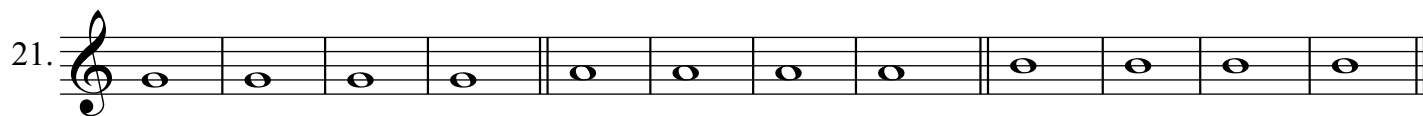
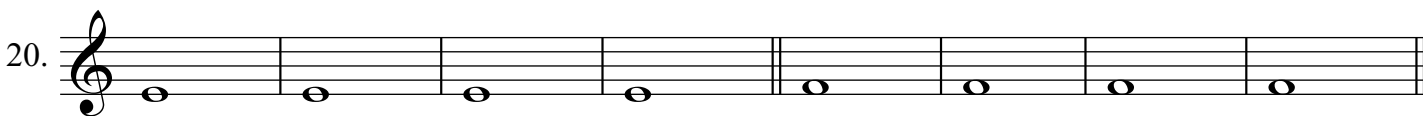
ODREDI TERCE PO VRSTI (M3 ILI V3) I POTPIŠI ABECEDOM.



ODREDI TERCE PO VRSTI (M3 ILI V3) I POTPIŠI ABECEDOM.

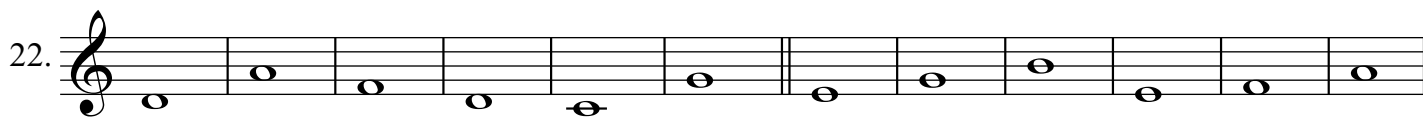


NAPIŠI V3 I M3 UZLAZNO I SILAZNO I POTPIŠI ABECEDOM.



NAPIŠI M3 UZLAZNO

NAPIŠI M3 SILAZNO



NAPIŠI V3 UZLAZNO

NAPIŠI V3 SILAZNO



42

ta a te ta a te

7. $\frac{2}{4}$

8. $\frac{2}{4}$

9. $\frac{2}{4}$

10. $\frac{3}{4}$

11. $\frac{4}{4}$

12. $\frac{4}{4}$

ta fa te fe ta te fe ta fa te

13. $\frac{2}{4}$

14. $\frac{2}{4}$

15. $\frac{2}{4}$

16. $\frac{2}{4}$

17. $\frac{3}{4}$

18. $\frac{4}{4}$

19. $\frac{4}{4}$

MP

te / te - fe

27.

28.

29.

ta / ta - fa /

30.

31.

ta a te fe ta a te fe

32.

33.

34. $\frac{2}{4}$

35. $\frac{2}{4}$

36. $\frac{3}{4}$

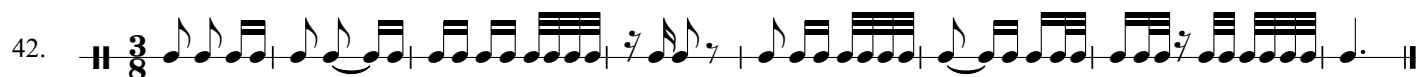
37. $\frac{3}{4}$

38. $\frac{4}{4}$

39. 

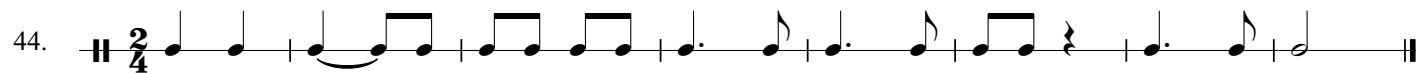
40. 

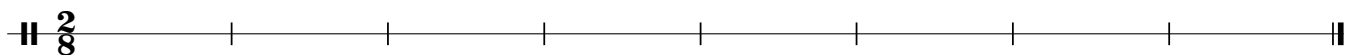
41. 

42. 

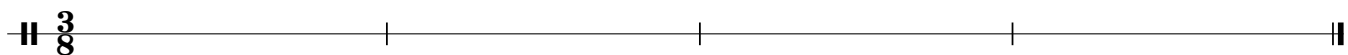
43. 

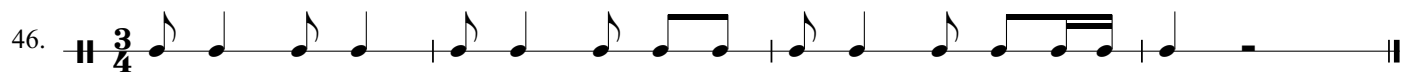
PREPIŠI U OSMINSKU MJERU.

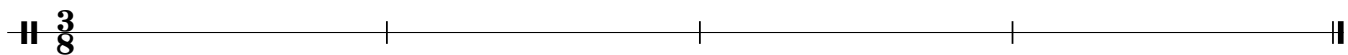
44. 



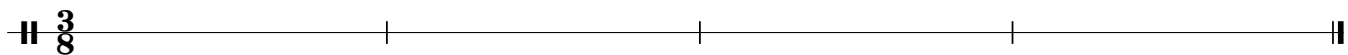
45. 



46. 



47. 



1. Pročitaj ritamskim slogovima:

ta te ta te ta fa te fe ta te / ta fa te fe ta te fe ta te fe ta / ta /

ta fa te fe ta fa te / te ta fa te fe ta fa te ta te fe ta te ta te fe ta / ta a /

2. Potpiši ritamskim slogovima:

3. Ritamske slogove napiši notama:

ta te ta te fe ta te ta fa te ta fa te fe ta te fe / te

ta fa te ta fa te fe ta te fe ta fa te ta fa te fe ta / te ta a

1. Pročitaj ritamskim slogovima:

$\frac{3}{4}$

 / te ta te fe ta fa te ta / ta te ta fa te fe ta / te te /

ta te te ta te fe / ta te fe ta te fe / te fe ta / ta a /

2. Potpiši ritamskim slogovima:

$\frac{3}{4}$

3. Ritamske slogove napiši notama:

$\frac{3}{4}$

 ta te ta te fe ta te fe ta fa te / te ta / / te fe

ta fa te fe ta te te ta fa te ta te te ta te fe ta te / te ta a

LJESTVICE

52

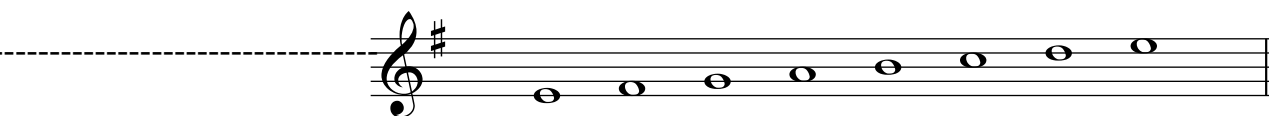
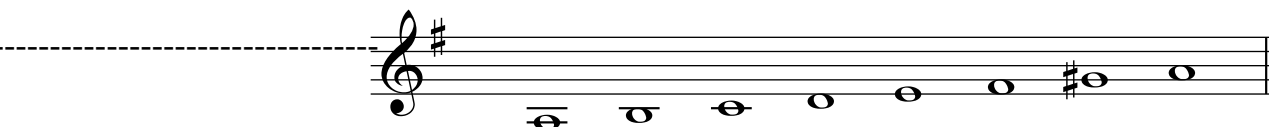
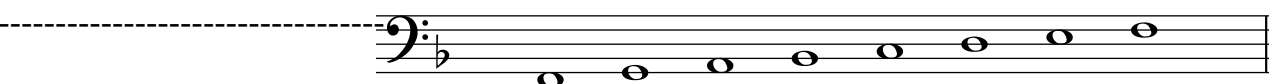
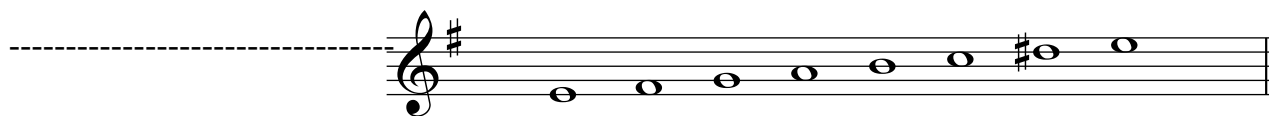
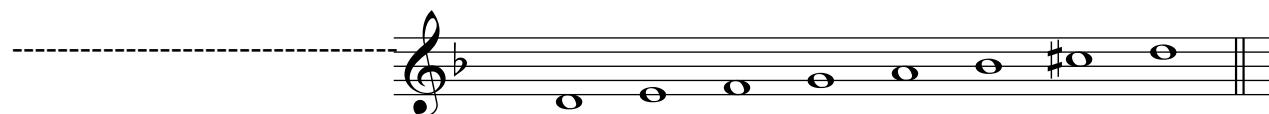
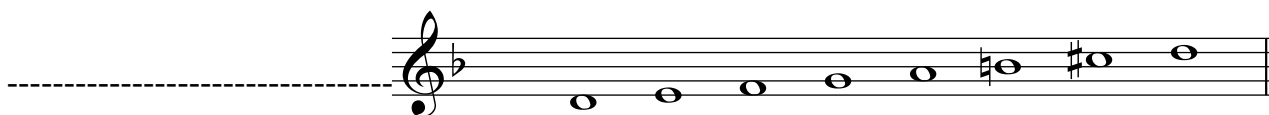
1. Polustepeni u duru su između ___ i ___, ___ i ___ stupnja.

Polustepeni u molu prirodnom su između ___ i ___, ___ i ___ stupnja.

Polustepeni u molu harmonijskom su između ___ i ___, ___ i ___, ___ i ___ stupnja.

Polustepeni u molu melodijskom su između ___ i ___, ___ i ___ stupnja.

2. Potpiši abecedom, označi polustepene i potpiši ih stupnjevima. Odredi ljestvicu.



3. Glavni stupnjevi: Tonika je _____ stupanj i _____ stupanj. _____ je

IV stupanj, dominanta je _____ stupanj. Vođica u duru je _____ stupanj, a u molu

MP

_____ VII stupanj.

4. Napiši predznake.

G dur d mol C dur F dur e mol

5. Napiši ljestvice, potpiši ih abecedom, označi polustepene i tetrakorde.

d mol harmonijski

e mol melodijski

G dur

a mol harmonijski

F dur

d mol melodijski

